

House and Land Package



The Capel

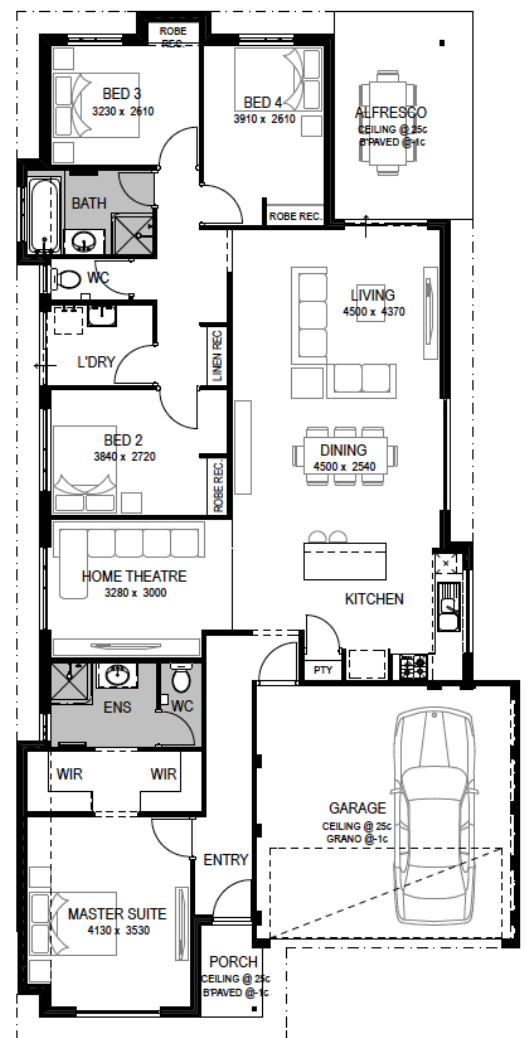
\$429,490*

258 Caribea Way, Hammond Park



Home and Inclusions:

- Up to 3.7kW photovoltaic solar system with 3kW inverter (if applicable)
- Ample lighting and power points included throughout
- Full painting to ceilings, doors and frames, and wood surfaces (internal walls optional)
- Formica tightform benchtops throughout
- Stainless steel electric fan forced oven
- Stainless steel gas hotplate with wok burner
- Stainless steel 1¾ bowl designer sink with sink mixer tap
- Designer handles to all cupboards and drawers
- Soft closers to all cupboards and drawers
- Mirrors to vanities
- Privacy latch to bathroom, ensuite and WC
- China basins to bathroom and ensuite
- Ceramic soap holders in showers
- Designer double towel rails and toilet roll holders to bathroom, ensuite and WC
- Stylish range of floor and wall tiles (as per plan) to bathroom and ensuite
- 2 metre high tiling to shower recesses
- Vanity cupboards to ensuite and bathroom standard with tiling to underside and hobs
- 25 degree roof pitch with your choice from the builders' Harmony Roof Tiles range (Habitat Collection)
- Coloured aluminium windows and sliding doors
- And so much more



Sam Wills M: 0449 613 894 E: samwills@wahousingcentre.com.au

Perth 6555 7589 | South West 9760 1900
wahousingcentre.com.au



WA Housing Centre

Builder's Registration No. 9769.