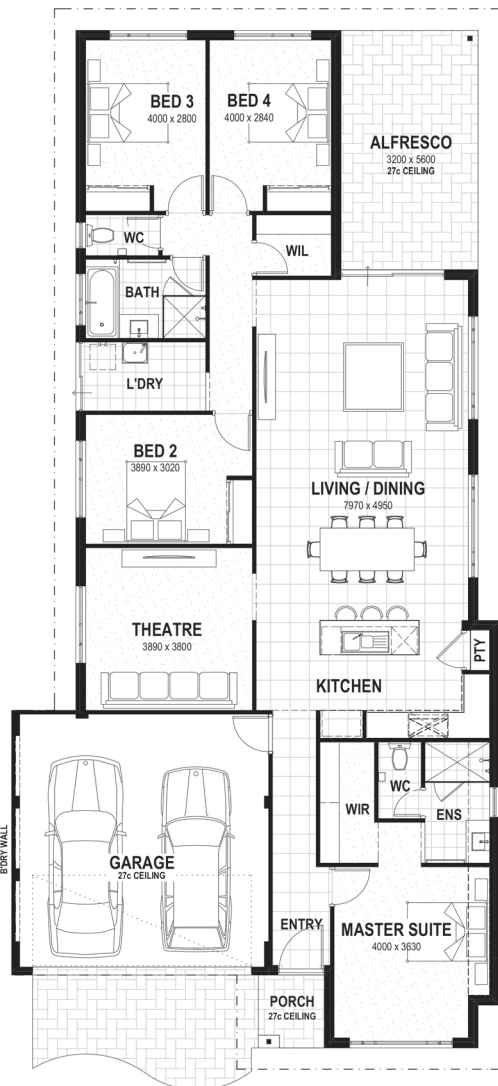




Lot 257 Caribea Way, HAMMOND PARK, WA
 Lot size: 375sqm • House Size: 229.93sqm



THE STELLAR 12.5

Please Note: The calculations in the Home and Land ("H&L") package price are based on the house and land price, standard siteworks, 5% deposit, and a principal and interest rate of 4.39% over 30 years. The H&L package price is general information only, subject to change without prior notice and subject to availability. Images are for illustrative purposes. Non first home buyers may be subject to different conditions. *Go to our website for full terms and conditions. BRN:10689.

House & Land

FROM \$490,400

- Reverse cycle air-conditioning by Ford & Doonan.
- High ceilings throughout.
- Stone benchtops to kitchen, bathroom and ensuite.
- Quality carpets to bedrooms and feature rooms.
- Premium 450mm x 450mm tiles to entry, living, dining and kitchen.
- A short drive to Fremantle, the Perth CBD and Coogee Beach.
- Minutes to shops and restaurants.
- Nearby to the Kwinana Freeway, Cockburn Central Station and bus routes.

turn up the value **HUGE** homes with **BONUS** turn-key inclusions.

Contact Dave Bullen

0430 563 422

dave.b@summithomesgroup.com.au



POWERED BY THE STRENGTH OF

