

House and land package.



The Bayswater From \$390,190*

253 Canary Drive, Hammond Park

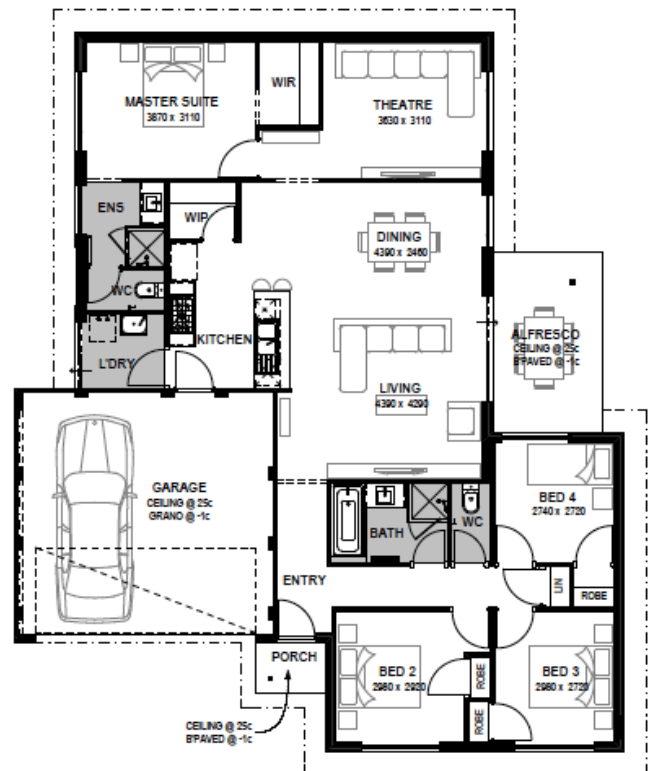


HOME SIZE	BEDROOMS	BATHROOMS	CAR SPACE
184 ²	4	2	2

Quenda estate is an intimate new land estate where your family can live and grow amongst natural surrounds. Just 25 minutes south of Perth and Fremantle. Only minutes away from Cockburn central shopping centre and Aubin Grove train station and Glen Iris golf course it is centrally located in Hammond Park. This bread and butter 294 square metre block squat lot allows for a budget design but with all the trimmings to be built with room for a back yard for the kids and the dogs.

Our exclusive package includes:

- Instantaneous gas hot water system
- Solar efficient eaves to total living area
- R4.0 insulation to all living areas and garage
- Four star rated toilet systems
- Weather seal to all external doors
- Six star energy rated as standard
- Acrylic texture coat render (if applicable)
- Modern front elevation (as illustrated)
- Roof selection from the Harmony Habitat Range Roof Tiles
- Remote controlled Flush Fit Pelmet Garage Door (from Builder's range)
- Paving to driveway up to six metres, path, verandah/ porch and alfresco (from builder's standard range)
- Quality Durasheet lined ceiling to alfresco • Front and rear external garden taps
- Flick mixer tapware to bathroom and ensuite
- Soft-closers included to all cupboard doors
- Quality china basins



Low Fellowes M: 0418 225 335 E: lewisf@gohomes.com.au

Visit gohomes.com.au



*See website and specific package for full terms and conditions. Price correct at time of printing. Images and landscaping are for illustrative purposes. FHOG discounted from price and non-first home buyers subject to different circumstances. GO Homes is not the owner of the land. The land is advertised by agreement between GO Homes and the land developer and/or vendor. Advertised price does not take include transfer duty, settlement costs and other settlement of the land fees. Provisional sum for site works included in price. BC 9769.