

House and land package.



The Glendale From \$465,190*

257 Baxteri Way, Hammond Park

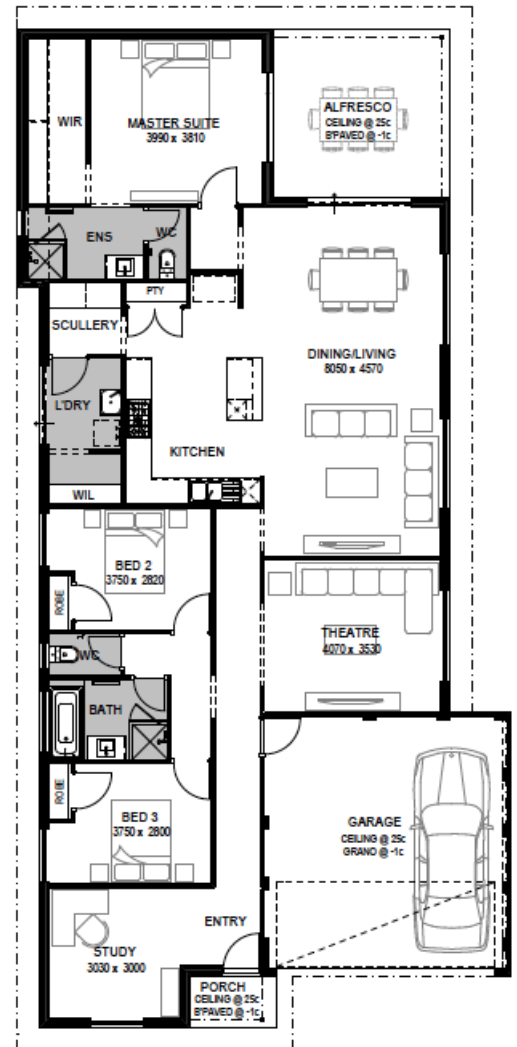


HOME SIZE	BEDROOMS	BATHROOMS	CAR SPACE
226 ²	3	2	2

Quenda, Hammond Park estate is an intimate new land estate where your family can live and grow amongst natural surrounds. Just 25 minutes south of Perth and Fremantle. Only minutes away from Cockburn central shopping centre and Aubin Grove train station and Glen Iris golf course it is centrally located in Hammond Park. This bread and butter family sized block allows for a family design with all the trimmings to be built with room for a back yard for the kids and the dogs. The Glendale design is a great 3 bedroom design with a massive kitchen area and scullery as well as extras such as a theatre room and study/office room.

Our exclusive package includes:

- Fujitsu ducted reverse cycle air conditioning throughout
- Choice of 6 elevations
- High ceilings to living areas (31c to kitchen, living, dining and 28c to alfresco)
- 600mm x 600mm floor tiling to living areas
- Quality carpet with underlay to bedrooms and theatre (if applicable)
- Roller blinds throughout
- Essastone benchtops to kitchen, ensuite and bathroom
- LED downlight package (10 LEDs)
- Luxury Italian Bertazzoni 900mm stainless steel appliances
- Flick mixer tapware throughout
- Rain shower head to bathroom and ensuite
- And so much more



Low Fellowes M: 0418 225 335 E: lewisf@gohomes.com.au

Visit gohomes.com.au



*See website and specific package for full terms and conditions. Price correct at time of printing. Images and landscaping are for illustrative purposes. FHOG discounted from price and non-first home buyers subject to different circumstances. GO Homes is not the owner of the land. The land is advertised by agreement between GO Homes and the land developer and/or vendor. Advertised price does not take include transfer duty, settlement costs and other settlement of the land fees. Provisional sum for site works included in price. BC 9769.