



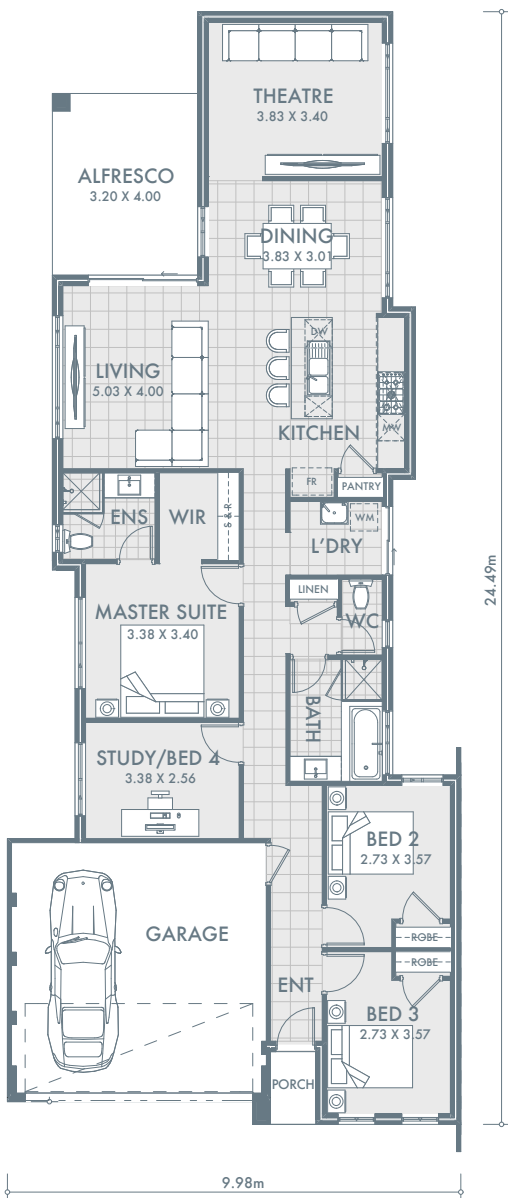
Pictures for illustration purposes only

SELECT Plus PACKAGE
\$430,504



THE CLAIRVIEW

HOUSE AND LAND PACKAGE



LOOK FOR **10m** WIDE LOTS

LIVING AREAS

Indoor area	144.35m ²
Garage	32.72m ²
Alfresco	12.80m ²
Porch	1.79m ²
Total	191.66m²

INCLUSIONS

- Plus** Reverse cycle ducted air-conditioning
- Plus** High ceilings throughout home
- Plus** LED Lighting throughout home including external LED lights
- Plus** Stone benchtops to kitchen

- Choice of 1 x 900mm or twin 600mm ovens
- 900mm gas cook top and range hood
- 450mm x 450mm floor tiling to main living
- 600mm x 200mm tiling to wet areas
- Carpets with quality underlay
- Blinds throughout
- Two colour rendered front elevations
- Choice of quality basins and Flick mixer tap ware
- Quality European soft close draws and hinges throughout.



newchoice
homes

HOMES BUILT FOR *life*

LOT 250, BAXTERI WAY
 FOR FURTHER INFORMATION PLEASE CALL SAMANTHA
 ON 0458 242 204