

HOUSE & LAND FROM \$401,900

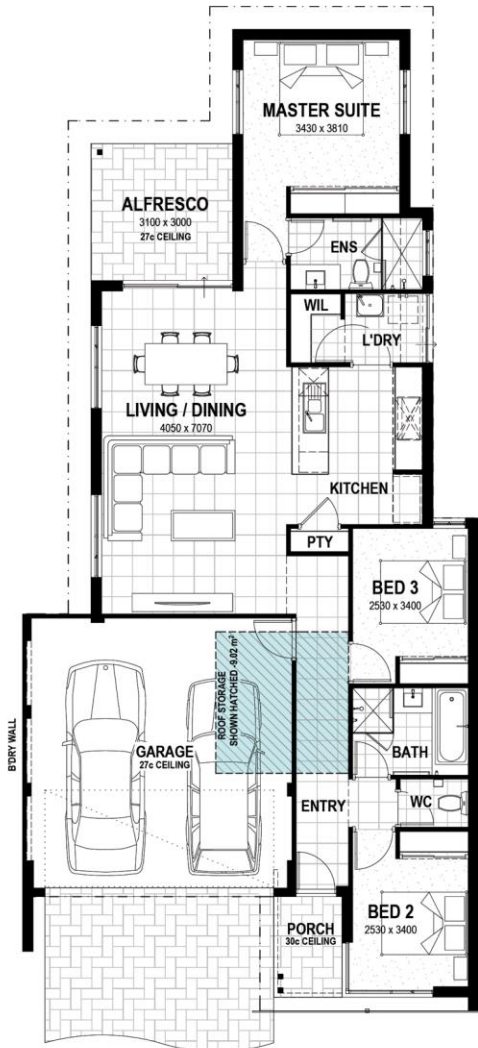
Lot 250 Baxteri Way, Hammond Park WA



LOT SIZE 315m²

HOUSE SIZE 160m²

LOT WIDTH 10m



- Modern home that maximises on space, with defined living areas.
- Parents can unwind in secluded master suite with double built-in robes.
- Family-friendly kitchen with tons of bench space.
- Reverse cycle Air-Conditioning
- High 30 course Ceiling
- Stone Benchtops Throughout
- Premium Flooring Throughout
- 9m2 of Roof Storage
- Allowance for Siteworks

Dynasty 10S

Contact: **Domenic Chiellini**

0430 016 929

domenicc@summithomesgroup.com.au

Disclaimer: New Generation Homes is not the owner of the land. New Generation Homes has permission from the owner of the land to advertise this House and Land ("H&L") package at the specified price. A separate H&L contract will be generated by New Generation Homes and the relevant developer. At the time of listing, the price was current and the land is still available for sale. The land price does not include transfer duty, settlement costs and any other fees associated with the settlement of the land. Images used are for illustrative purposes only. BRN 10689.



POWERED BY THE
STRENGTH OF

SUMMIT
HOMES GROUP