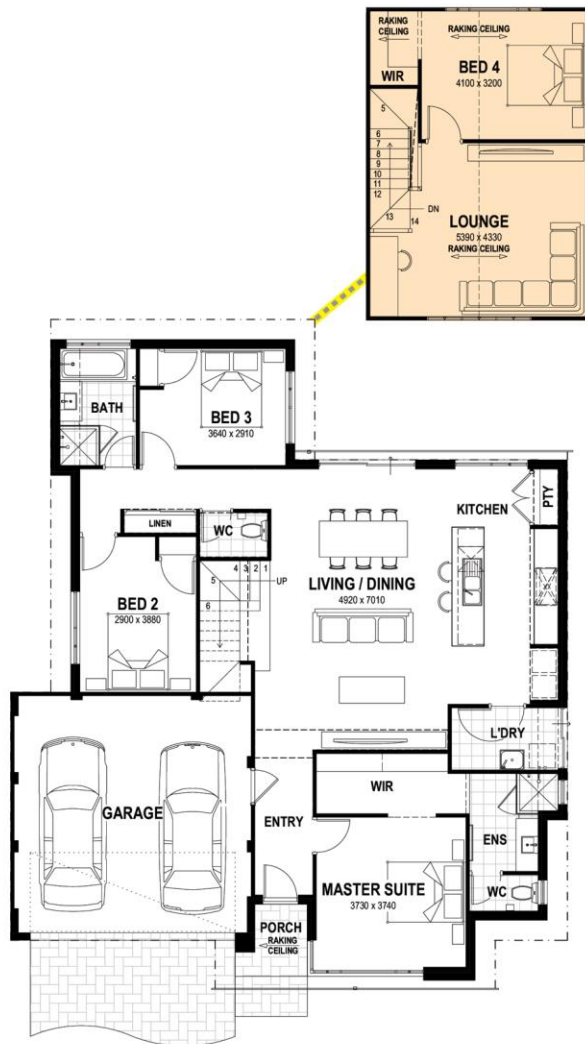


# HOUSE & LAND FROM \$478,100

Lot 254 Canary Drive, Hammond Park WA



LOT SIZE 291m<sup>2</sup>    HOUSE SIZE 179m<sup>2</sup>    LOT WIDTH 15m



Fleetwood 15



- Huge master suite downstairs, plus two children's bedrooms.
- Upstairs loft with raked ceilings could be flexibly used as another bedroom or guest retreat.
- Large open plan kitchen, dining and living area.
- Ducted reverse cycle air-conditioning
- Quality flooring package
- Internal wall painting
- Essastone kitchen
- Window treatments
- Site work allowance

Contact: **Domenic Chiellini**  
**0430 016 929**  
**domenicc@summithomesgroup.com.au**

Disclaimer: New Generation Homes is not the owner of the land. New Generation Homes has permission from the owner of the land to advertise this House and Land ("H&L") package at the specified price. A separate H&L contract will be generated by New Generation Homes and the relevant developer. At the time of listing, the price was current and the land is still available for sale. The land price does not include transfer duty, settlement costs and any other fees associated with the settlement of the land. Images used are for illustrative purposes only. BRN 10689.



POWERED BY THE  
STRENGTH OF

