

LOT 258 Baxteri Way, HAMMOND PARK

\$480,000



4



2



360 m2

Complete Turnkey, No more to spend.

This stunning street front total turnkey inclusions new and modern house and land package is waiting for you to take to the next step and get your building process started!

This luxurious 4x2x2 + Theatre + Alfresco + Activity + Spacious open plan living design comes with a feature front elevation (as per pic), functional style and endless possibilities to suit your lifestyle in Hammond Park!

++++ TURNKEY INCLUSIONS

- ++++ STREET FRONT NEW HOME
- ++++ FULL CUSTOM DESIGN AVAILABLE
- ++++ FINANCE ASSISTANCE AVAILABLE
- ++++ 2-STOREY OPTION AVAILABLE

To be built by Residential Building WA & In-Vogue Homes. Builders of the Telethon home for over 10 consecutive years.

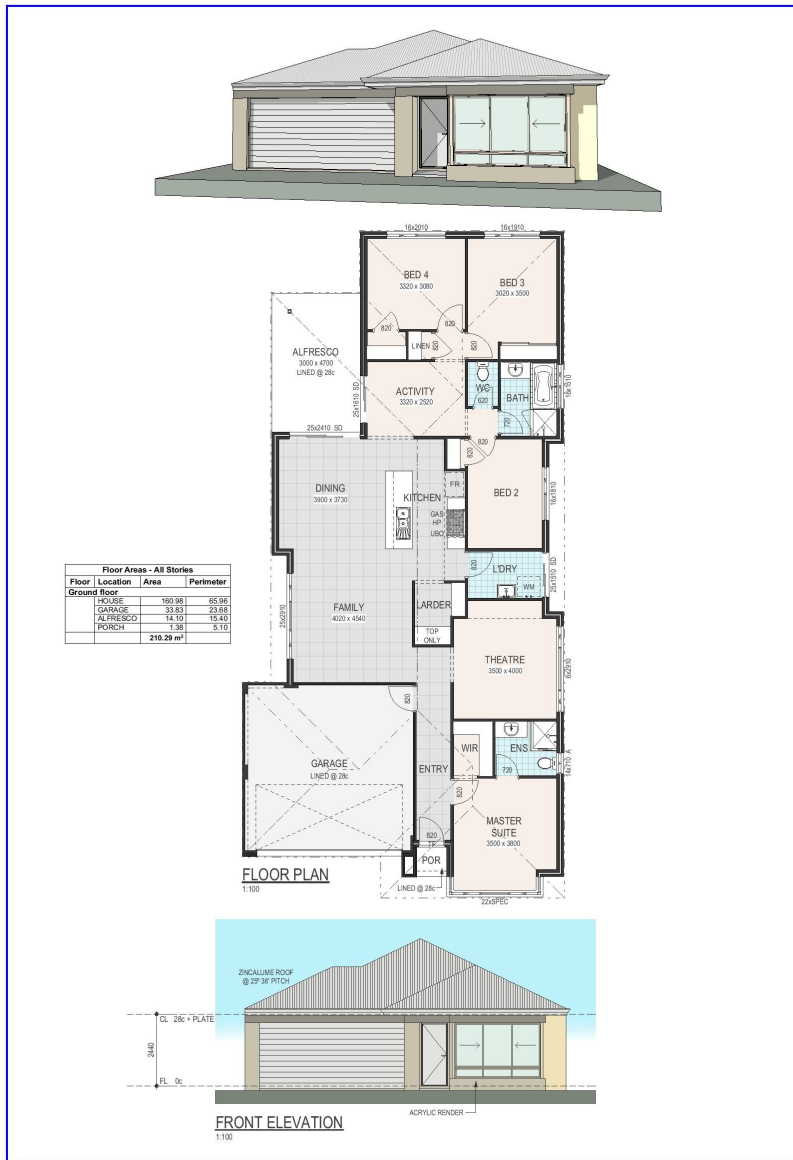
So hurry don't wait and miss out!! Call - SMS - E-mail now for floorplan and full details.

AJ 9202 9214

Amit.Jain@rbwa.com.au

residentialbuildingwa.com.au

**RESIDENTIAL
BUILDING WA**



Inclusions

- * Turnkey Inclusions:
 - * Ducted reverse air-conditioning 8 outlets 4 zones
 - * LED downlights throughout your home
 - * Premium floor coverings of your choice
 - * Quality carpet with underlay to all bedrooms
 - * Quality window treatments throughout your new home
 - * Internal wall painting with your choice of colour
 - * Wireless doorbell
 - * Stunning front elevation
 - * 20mm Essa stone bench tops to kitchen.
 - * Home Theatre
 - * Activity area
 - * Master bedroom feature WIR and ENS
 - * Dishwasher recess.
 - * Premium 900mm Italian Artusi Kitchen Appliances including Rangehood
 - * Soft closing drawers
 - * Digital ready TV ready
 - * Quality Caroma bathroom fixtures, tapware and accessories
 - * Feature front door.
 - * Letterbox and clothesline included
 - * Semi-frameless shower screens to Bathroom and Ensuite.
 - * Colourbond gutters and downpipes with your choice of colour.
 - * Double power point...

CELEBRATING 50 YEARS
 Proud builder of the **telethon** home since 2006

RESIDENTIAL
BUILDING WA

invogue
2-storey designs

totalhomes

NEW
LEVEL
HOMES

JWHGROUP

Property ID: 11221202

* The details contained in this home and land package were correct at the time of listing however pricing and land availability is subject to change. While this lot was available at the time of listing we do not own the lot. All care has been taken to ensure the home design shown is suitable for the advertised lot however design and specification is subject to shire and developer approvals. Changes made to the design may affect the total cost of the package. Photos are for illustration purposes only and may not depict the layout or inclusions of the home you purchase. For more information speak to a New Home Building Consultant and request a floorplan and specification for this package. BC13053.