

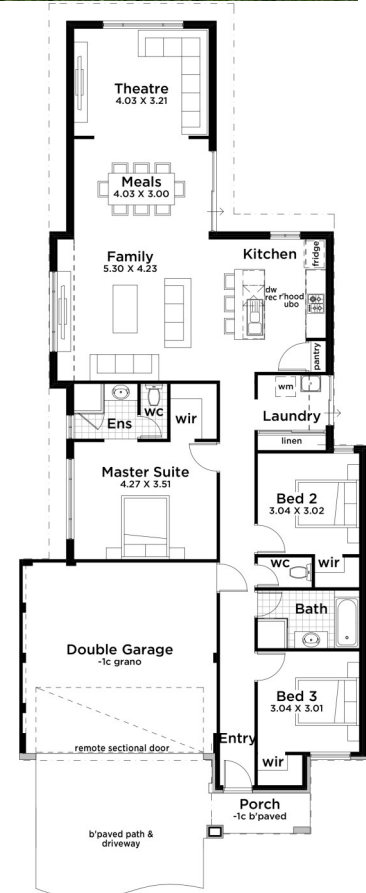
HOUSE AND LAND PACKAGE



Lot 260, Quenda Estate Hammond Park

This 3 x 2 home design features:

- Spacious open plan living area with direct access to a home theatre
- Gourmet style kitchen with an island bench
- Stainless steel appliances
- Resort inspired master bedroom complete with an ensuite and walk-in robe
- Two minor bedrooms with walk-in robes
- Double garage with remote sectional door
- Rendered elevation
- Fencing & landscaping package included



From \$393,090

CALL BEN WILLS 0423 758

Aussie Living Homes, Builder Registration Number 10805 is part of Ventura Home Group Pty Ltd. Aussie Living Homes is not the owner of the land and cannot guarantee its price or availability. Aussie Living Homes has been authorised by the landowner to advertise the land as being available at the purchase price specified. The price advertised is an estimate of the costs to build with Aussie Living Homes and separately purchase the underlying land from the owner of the land. The estimated price is therefore subject to change once all site works plans are completed and the current market value of the land and other relevant costs are taken into consideration. The elevation and images depicted in this advertisement are solely for illustrative purposes and are based on display homes, and may include features not included in our standard building contracts. The information and estimated pricing is correct at the time of printing, but subject to change without notice. Please read our terms and conditions on our website <http://www.aussielivinghomes.com.au/HouseandLandDisclaimer> for further details. Advertised price includes the \$10,000 First Home Owners Grant (if applicable).


aussie
LIVING HOMES
Making it possible