

# QUENDA

HAMMOND PARK

## House & Land from \$454,700

Lot 271 McPhee Rd Hammond Park WA



 3  2  2 | Lot Size 294m<sup>2</sup> | House Size 192m<sup>2</sup> | Lot Width 10.5m

### BONUS WISH LIST \$55k worth of inclusions

- Open plan living area overlooks the alfresco.
- Parents' retreat upstairs features a master suite & ensuite.
- Spacious home theatre is perfect for family movie nights.

#### BONUS WISH LIST \$55K PROMOTION

- Stone bench tops to kitchen, bathroom & ensuite.
- Reverse cycle air conditioning system.
- 5.32kw solar panels
- 20 LED lights
- 1020mm wide designer entrance door
- Carpets to bedroom, theatre & study (if applicable)
- Crosby floor tiles to main living
- 31c ceiling height

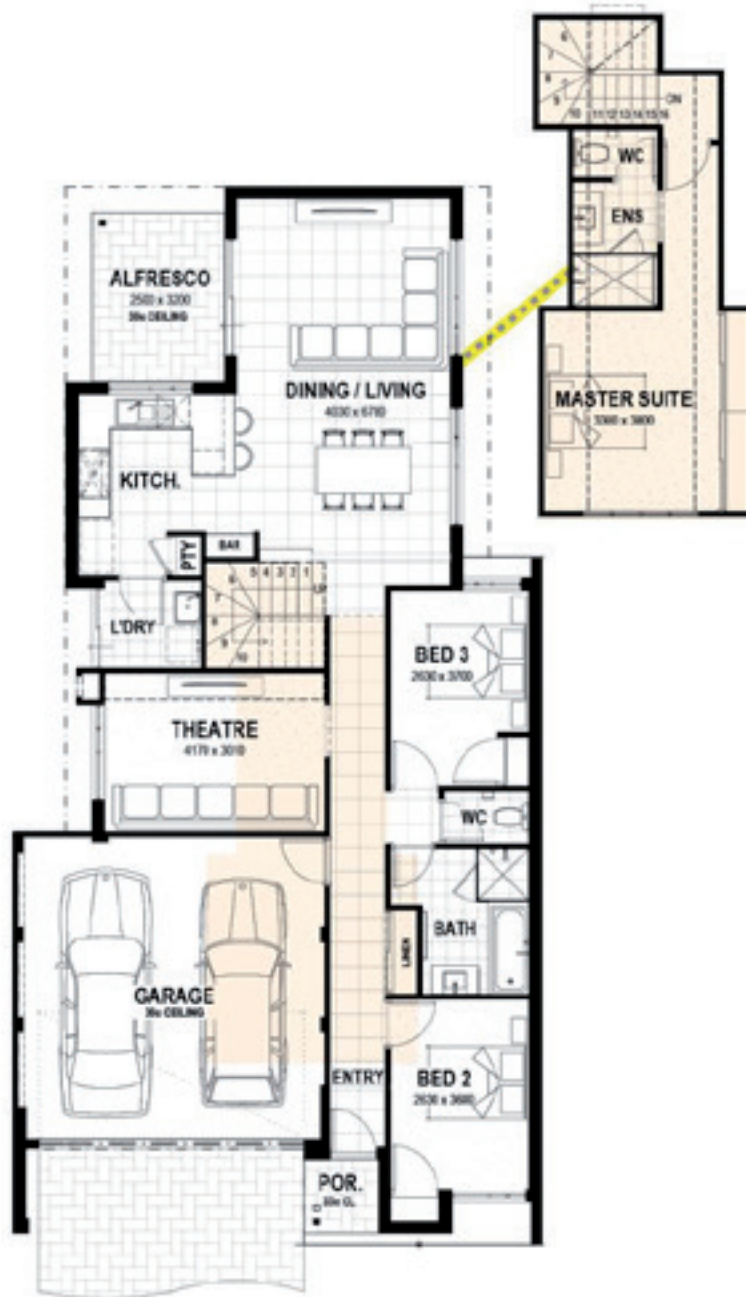
**Contact: Astor D'Rozario**  
**0416 105 920**  
**astord@summithomesgroup.com.au**

Disclaimer: New Generation Homes is not the owner of the land. New Generation Homes has permission from the owner of the land to advertise this House and Land ("H&L") package at the specified price. A separate H&L contract will be generated by New Generation Homes and the relevant developer. At the time of listing, the price was current and the land is still available for sale. The land price does not include transfer duty, settlement costs and any other fees associated with the settlement of the land, images used are for illustrative purposes only. BC10689.



# QUENDA

## HAMMOND PARK



Apex 10X

**Contact: Astor D'Rozario**  
**0416 105 920**  
**astord@summithomesgroup.com.au**

Disclaimer: New Generation Homes is not the owner of the land. New Generation Homes has permission from the owner of the land to advertise this House and Land ("H&L") package at the specified price. A separate H&L contract will be generated by New Generation Homes and the relevant developer. At the time of listing, the price was current and the land is still available for sale. The land price does not include transfer duty, settlement costs and any other fees associated with the settlement of the land, images used are for illustrative purposes only. BC10689.

